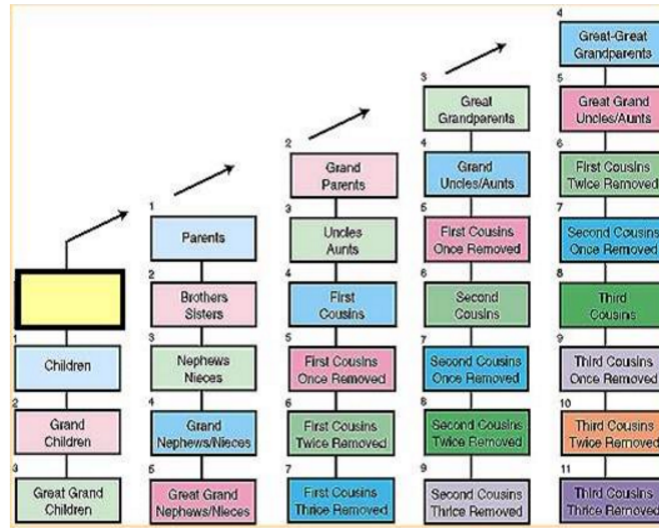


Consanguinity/Affinity Chart



**INSTRUCTION:**

**For Consanguinity (relationship by blood) calculations:**

Place the public officer/employee for whom you need to establish relationships by consanguinity in the blank box. The labeled boxes will then list the relationship by title to the public officer/employee and the degree of distance from the public officer/employee.

Anyone in a box numbered 1, 2, or 3 is within the third degree of consanguinity.

**For Affinity (relationship by adoption, marriage or domestic partnership) calculations:**

Place the spouse or domestic partner of the public officer/employee for whom you need to establish relationships by affinity in the blank box. The labeled boxes will then list the relationship by title to the spouse or domestic partner and the degree of distance from the public officer/employee by affinity.

Spouses are related in the first degree of affinity by marriage and domestic partners are related in the first degree of affinity by domestic partnership. For adoption and other relationships by marriage or domestic partnership, the degree of relationship is the same as the degree of underlying relationship by blood.